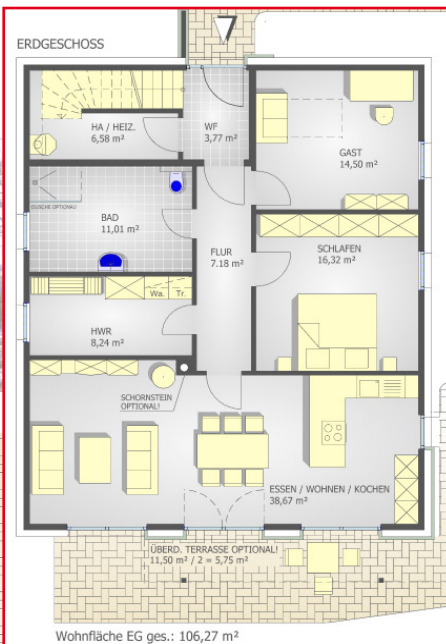




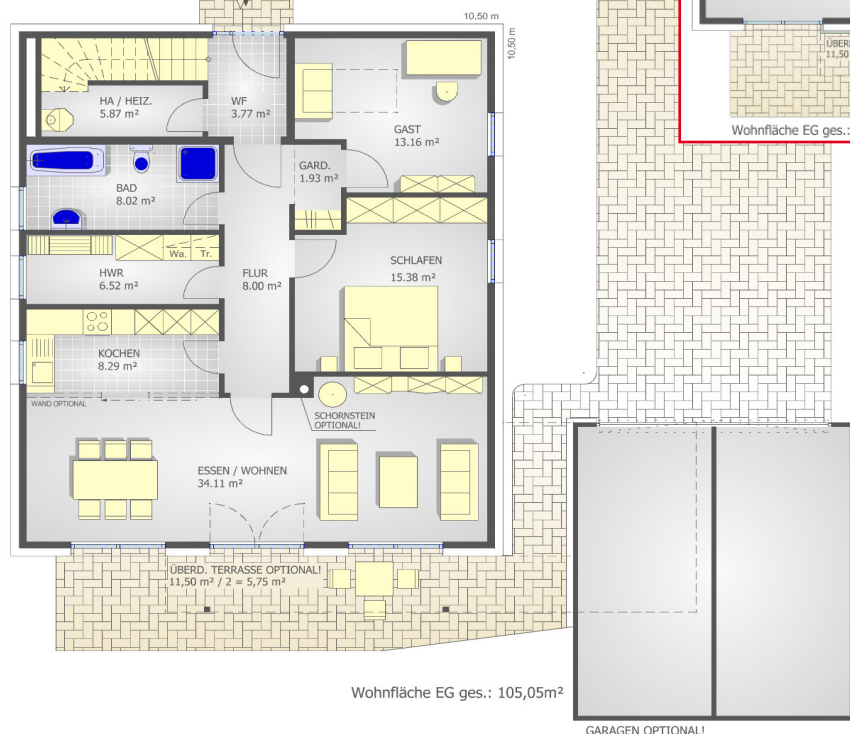
Grundriss Variante



OBERGESCHOSS



ERDGESCHOSS



Zweifamilienhaus Refugium

Nutzbare Fläche	228,77m²	Wohnfläche	208,56m²
Erdgeschoss	109,86m²	Erdgeschoss	105,05m²
Obergeschoss	118,91m²	Obergeschoss	103,51m²